

# COMPREHENSIVE SCHOOL HEALTH

An internationally recognized framework for supporting improvements in students' educational outcomes while addressing school health in a planned, integrated and holistic way.

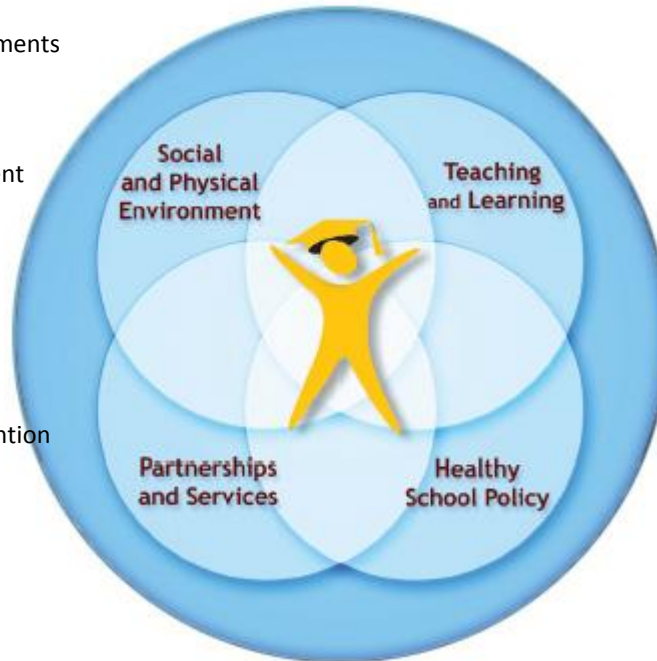
([From the Joint Consortium for School Health](#))

## Social and Physical Environment

- Hunger and meal/snack program
- Safe and supportive eating environments
- Staff wellness programs
- Physical activity including sport and extra-curricular activities
- Freedom from bullying or harassment
- Tobacco free environment
- healthy social and emotional environments
- Family events

## Partnerships and Services

- Public Health Promotion and Prevention
  - Public Health Nursing
  - Nursing Support Services
  - Vision Screening
  - Dental health
  - Tobacco Reduction
  - Nutrition
  - Aboriginal
  - Social and Emotional Learning
- City and Community Service Groups
- Recreation Programs
- Mental Health and Substance Use
- Freedom Quest
- Ministry of Children and Families
- Aboriginal Bands



## Teaching and Learning

- Health Behaviours
  - Hand washing
  - Sun Safety
  - Physical activity
  - Dental care
- Tobacco Reduction
- Nutrition, healthy food choices
- Social and Emotional Learning
- Health literacy

## Healthy School Policy

- Safety procedures and regulations
- Healthy foods – guidelines and safe and supportive eating environments
- Best practices re nutrition and lunch breaks
- Tobacco free schools
- Health Promoting Schools
- Mental Health and Addictions
- Aboriginal Health